

**Description:**

The Ampac TK34 strobe assembly has been designed to be fixed into any ceiling where there is roof access or ceiling tiles.

**Installation:**

**Observe anti-static precautions at all times**

**General**

1. Fit the strobes to the fascia as shown above
2. Decide on the orientation of the strobes with respect to the ceiling / ceiling tile.

**Ceiling Tile**

1. Remove the tile and cut a rectangular hole in the ceiling or tile 154mm X 74mm.
2. Fit the fascia and strobes so that it sits evenly over the hole
3. Screw the clamping plate down onto the tile.
4. Observing polarity connect the strobes to the system then replace the tile

**Ceiling with Roof Access**

The same assembly can be mounted onto a ceiling with roof access. The process will require two people as once the strobes have been fitted to the fascia and the hole is cut in the ceiling one will have to hold the strobes in the required position while the other, in the ceiling space, tightens the clamping plate down onto the ceiling.

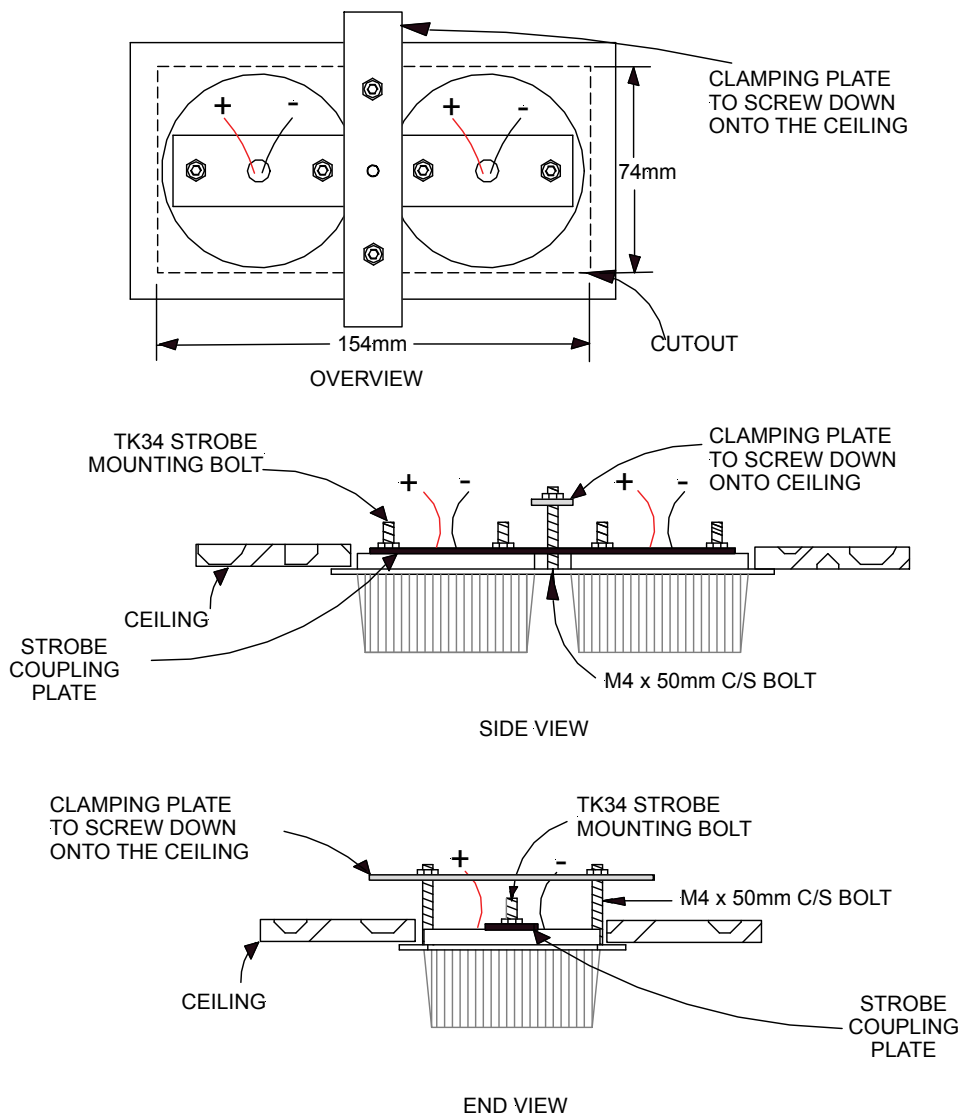


Figure 1: Mounting Instructions