

**Description:**

The EV20 is designed to automatically or manually initiate an occupant warning signal that complies with AS2220.

The EV20 installation kit consists of the control card, signal generator / amplifier board, wiring and mounting hardware.

**Note:** Factory "Time Out" setting is "30" seconds.

**Installation:**

**Observe anti-static precautions at all times**

1. Power down the FACP and disconnect batteries

2. Unclip a blanking plate from the front panel and clip the control card in its place. Insert label if required
3. Set the required time out between "Alert" and "Evac"
4. Mount the EV20 onto the standoffs then cable to the FACP Main Control Board and front panel control card
5. Connect the 27VDC to CN10 on the Main FACP Control Board. Note this board must be removed to access CN10
6. Power up the FACP, connect the batteries and test

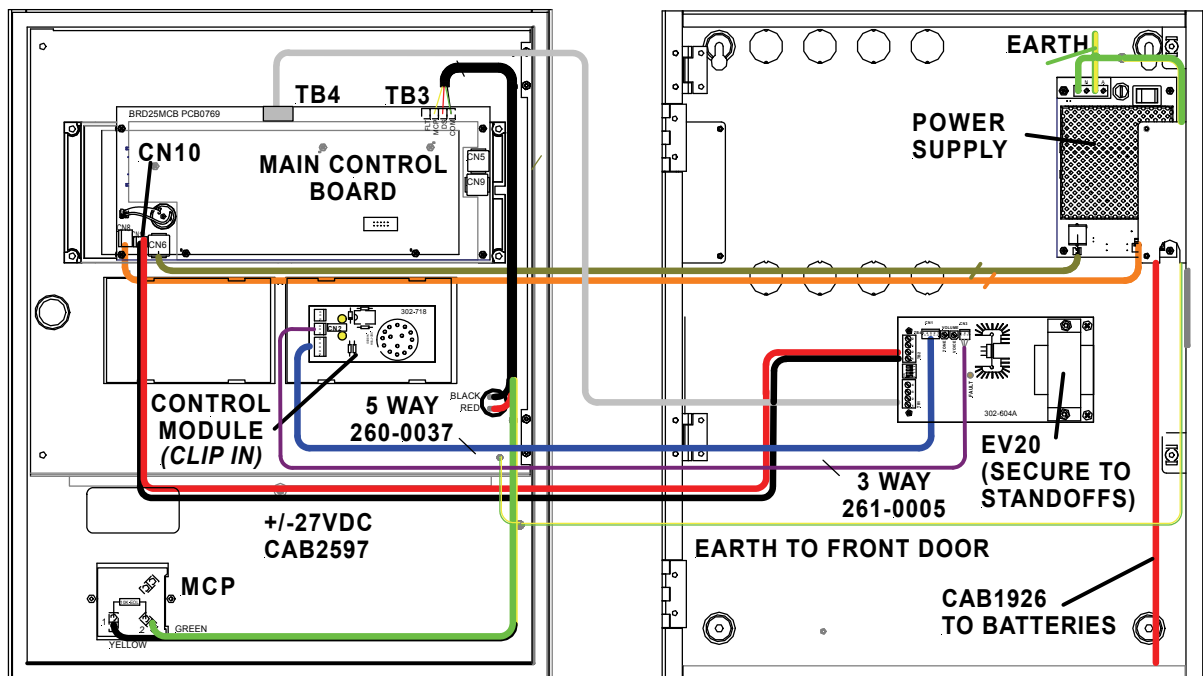
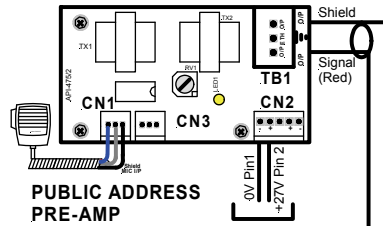
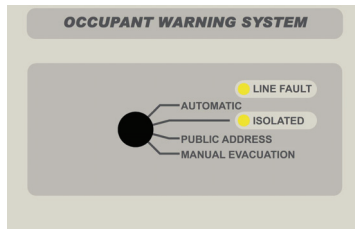


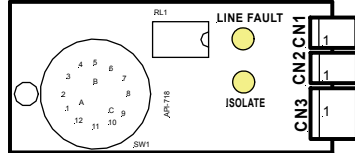
Figure 1: Exploded View of Cabling to the ZoneSense PLUS FACP

**NOTE:** The main control board must be removed to access the 27vdc connector CN10. this is done by removing the 4 screws in each corner of the main control board abs bridge and carefully tilting the board to plug the cable CAB2597 into CN10

FRONT PANEL



FRONT PANEL PCB



PANEL (Power)	TERMINAL No
FireFinder Brigade BRD	TB2/1 TB2/2
ZoneSense Plus	CN10/1 CN10/2
LoopSense	CN8/1 CN8/2

SYSTEM POWER

PANEL CONNECTIONS

WARNING SYSTEM

PANEL (O/P)	TERMINAL No
FireFinder Brigade BRD	TB5/1 TB5/2
ZoneSense Plus	TB4/3 TB4/4
LoopSense	TB3/7 TB3/8

NOTE: "WARNING SYSTEM" IS A MONITORED FACP O/P. THE EOL IS ONBOARD THE EV20 AND IS EFFECTIVELY MADE TO BE O/C (AT TB1) DURING AN EV120 FAULT CONDITION. THIS PRODUCES THE FAULT INDICATION AT THE FACP

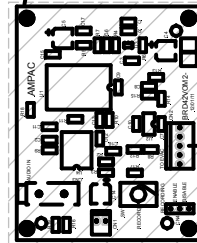
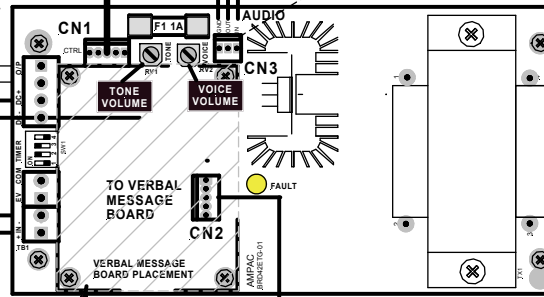


Figure 2: General Wiring diagram

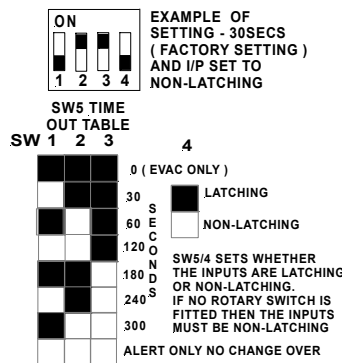


Figure 3: Dip Switch Settings