

## 16 Way Input Board

### Features

- Provides 16 Volt Free Switched Inputs
- All Inputs are Optically Isolated
- Full Function and Cause & Effect Programming
- Compatible with the **ZoneSense<sup>Plus</sup>** Fire Control Alarm Panel
- Compatible with the **LoopSense** Fire Control Alarm Panel
- Compatible with **FireFinder<sup>Plus</sup>** Fire Control Alarm Panel

### Description

The 16 Way Input Board provides additional programmable inputs to enhance the capabilities of the **FireFinder<sup>Plus</sup>**, **LoopSense** and **ZoneSense<sup>Plus</sup>** Fire Alarm Control Panels (FACP).

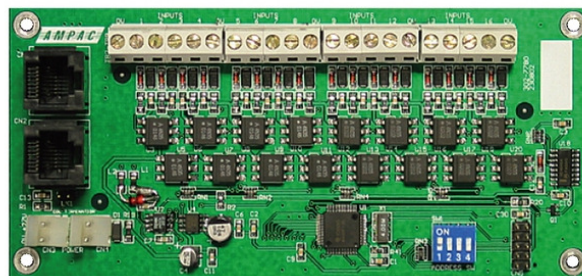
These boards are typically used in applications which require more than the standard FACP inputs for plant control equipment monitoring.

The Input board is designed to be installed internally within the Ampac FACP's.

Each input can be programmed to respond to various conditions such as:

- Fire
- Fault
- Evacuate
- Monitoring Equipment Feedback
- Comprehensive Function and Cause and effect programming.

Programming is achieved by using the applicable configuration tools for the **FireFinder<sup>Plus</sup>** and **LoopSense** FACP's and via the front panel controls of the **ZoneSense<sup>Plus</sup>**.



16 Way Input Board

### Item Numbers

4310-0040 16 Way Input Board

### Specifications

Operating Voltage	27Vdc
Quiescent Current	2.4mA
Max Current	45mA
Input Rating	Volt Free Switched
System Capacity	
FireFinder Plus	15 Max*
LoopSense	15 Max*
ZoneSense Plus	1 Max
	*Depending on cabinet size
Temperature	-5°C to 55°C
Humidity	0 - 95% (non condensing)

