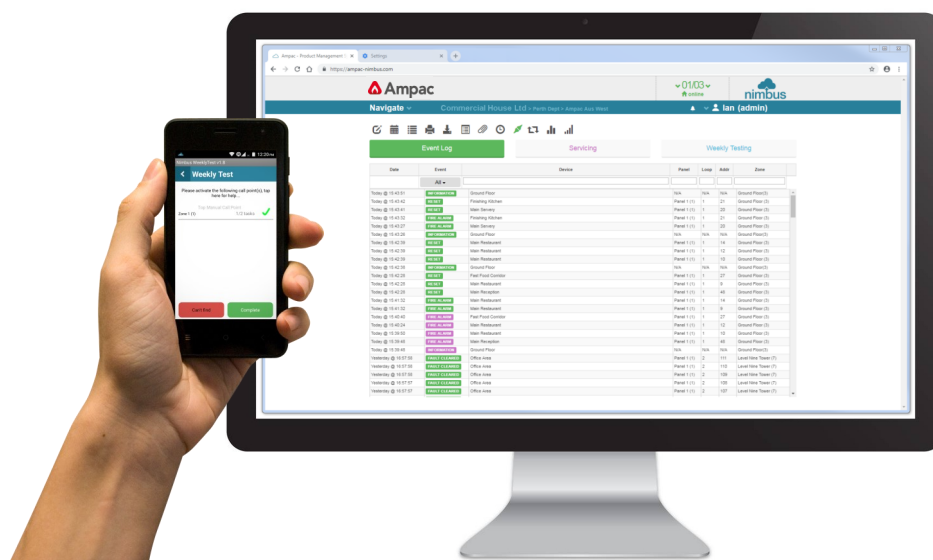


Fire detection and evacuation solutions that save lives.



## Cloud Based Fire Alarm Management



Nimbus is a non-intrusive add-on to the Ampac FireFinder and FireFinderPLUS range of control panels and communicates to a cloud hosted database using the Nimbus Dual Path Gateway.

Event notifications are recorded to an infinite history log that can be accessed via a standard web browser.

Nimbus is the ideal tool for building owners, facility property managers and fire alarm service & maintenance providers who need to receive live event notifications from their connected fire alarm systems.

### Features

- Simple Receive event notifications by email or mobile application (Android or iPhone)
- Subscribe users to events (fires, faults, pre-alarms & disablements)
- Attribute additional event notes following device activity
- Provide independent evidence of historical events
- Non-intrusive and simple to install

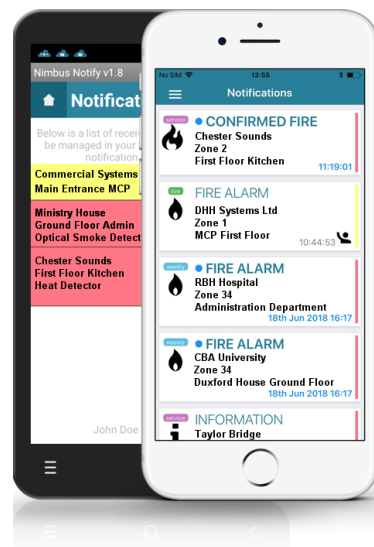
Fire detection and evacuation solutions that save lives.

## Mobil App Notifications

Utilising push notifications allows a smartphone to receive and display Nimbus events even when the smartphone is locked and the application closed.

Nimbus is totally configurable with user selectable sounds and repeat alerts. Upon receipt of an event, users can attribute notes describing the cause of the event, ideal for identifying false or unwanted alarms at a later date.

Notifications detail client name, site name, event type, and device description. The associated panel, loop, address, zone # and description are also displayed in an easy to read format aiding response.



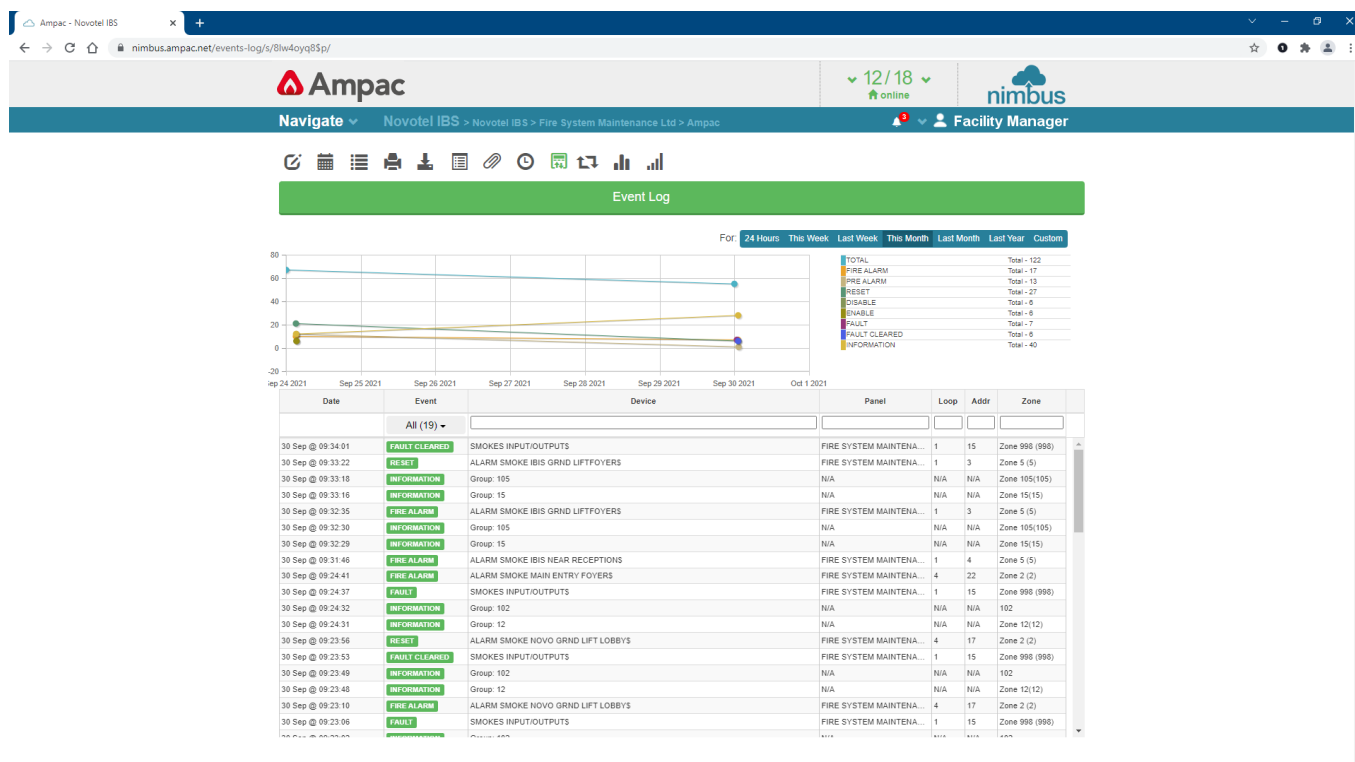
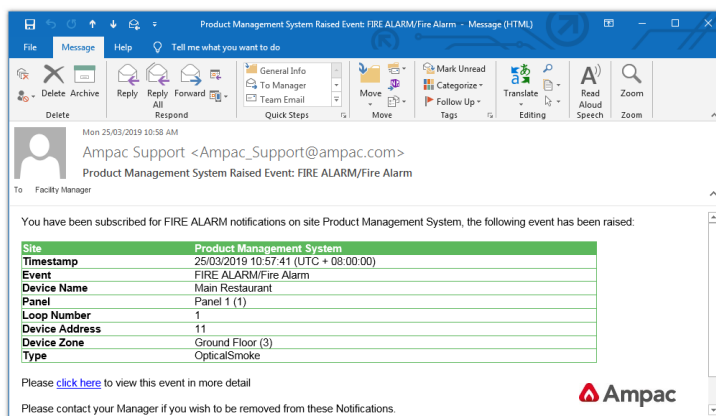
## Email notifications

Any number of recipients can receive email notifications based on a the event type such as Fire Alarm, Device Fault, Pre-alarm or Disablement.

## Web Dashboard

Event notifications are recorded to an infinite historical event log which users access through a web browser from where the data can then be reviewed in textual or graphical format.

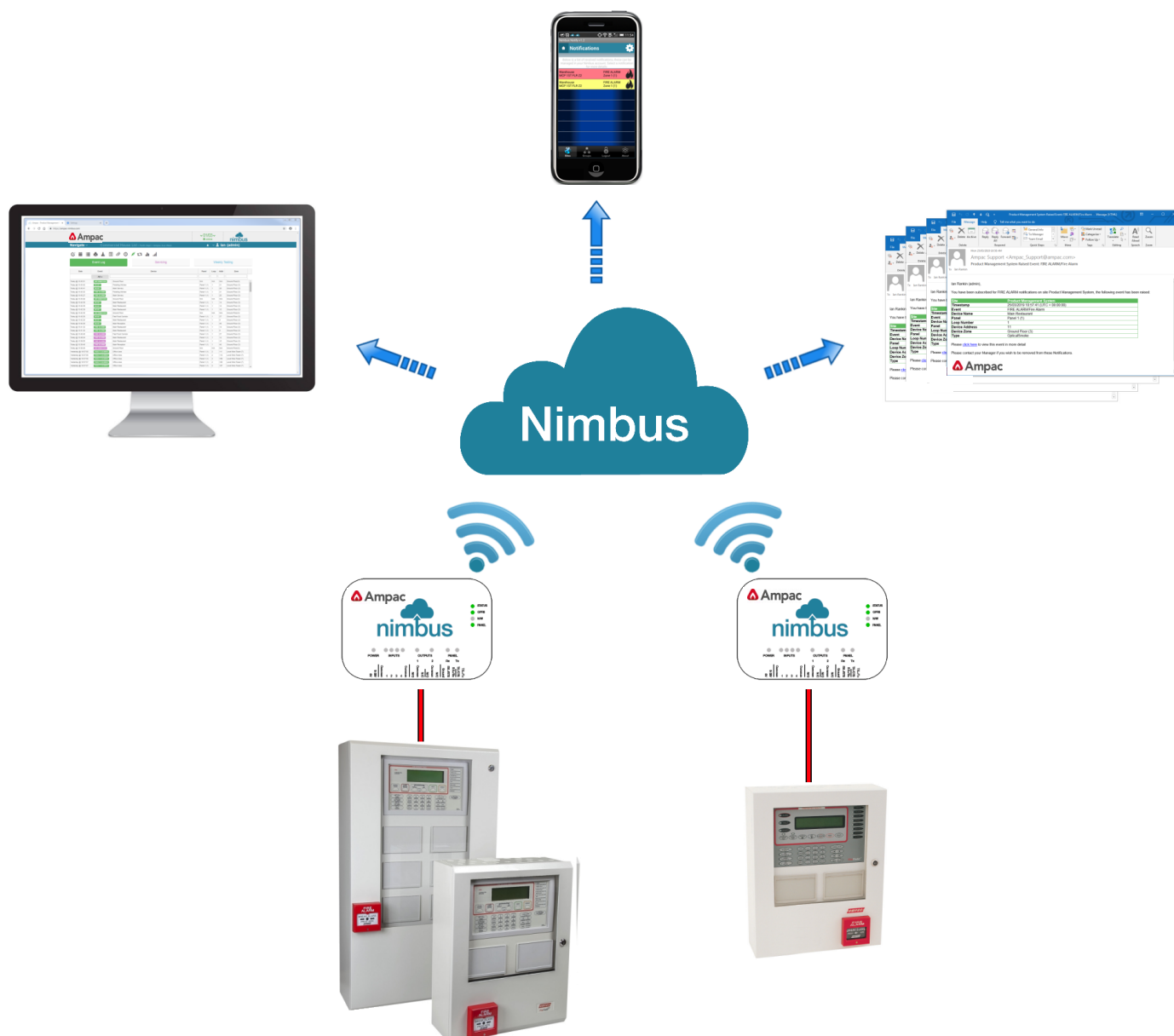
Gateway setup and configuration along with system administration of user and manager account privileges are catered for through the secure web browser portal.



Fire detection and evacuation solutions that save lives.

## Dual Path Nimbus Gateway

Connectivity to the Nimbus web portal is provided using the Dual Path Gateway offering both Ethernet and GPRS communications to the internet. With both paths connected, the Gateway will default to its primary Ethernet connection with secondary GPRS communications becoming available automatically should the primary path fail. The Gateway will periodically switch to GPRS to test the availability of the connection. The Gateway can also run continuously in GPRS mode on sites where an Ethernet connection is not available.



### Item Numbers

4100-3005	Dual Path Annual Subscription
4310-0099	FireFinder Plus Dual Path Gateway (factory fit)
4310-0099-CSO	FireFinder Plus Dual Path Gateway (CSO fit kit)
4310-0101-CSO	FireFinder Dual Path Gateway (CSO fit kit using BRD43SPB)