

Fire detection and evacuation solutions that save lives.

# Marine SmartView

## Event Management System



**Marine SmartView** is a fully featured event management system that has been designed to complement the Ampac range of marine fire control panels while presenting clear and precise alarm information to the operators enabling them to make emergency decisions with minimal delay.

### Features

- Simple graphical navigation with rapid location of event
- Easy to operate user interface
- Historical event logs all activity
- Zone and device text displayed from panel
- Event response action text
- Assignable user log-in permissions
- Extensible architecture enables operation in either Text only mode or Text & Graphical mode
- AV Manager enables the status of all device values to reviewed during service & maintenance activity

Fire detection and evacuation solutions that save lives.

## Overview

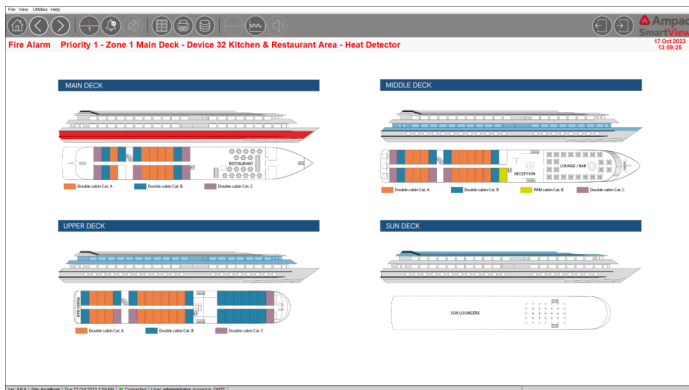
**Marine SmartView** is a truly extensible client server application whose primary role is dedicated to the monitoring of marine fire detection systems, from a single Luxury Yacht & Pleasure Craft employing one fire detection system to large Car & Passenger Ferry, Cruise Ships and Offshore Oil & Gas Platforms, **Marine SmartView** is more than capable. The system can also be tailored to monitor non-fire related events such as Supervisory, Security and Process alarms. In addition, extensive audit trail facilities allow comprehensive management of all event situations while command and control of remote systems can be undertaken seamlessly.

Despite its sophistication, **Marine SmartView** remains simple to setup and configure. No two projects are ever the same which makes **Marine SmartView** the ideal solution to any size of vessel.

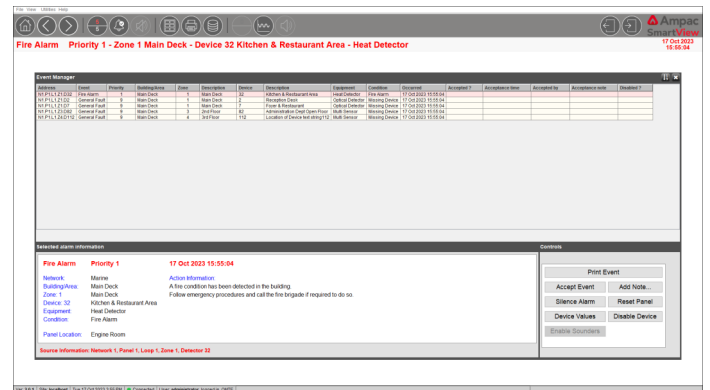


Applications include:

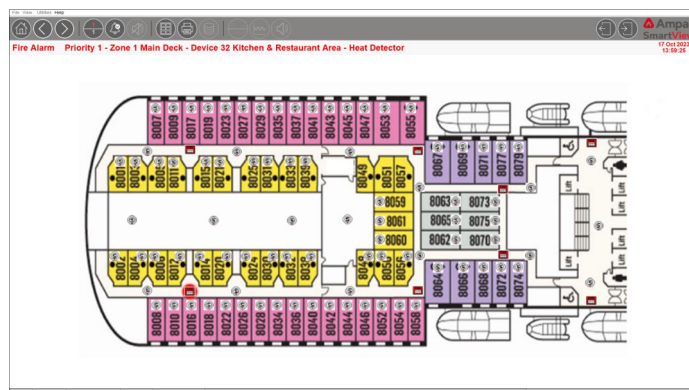
- Luxury Yachts
- Car & Passenger Ferry
- Cruise Ship
- Naval Ship
- Container / Bulk Carriers
- Offshore Oil & Gas Platforms



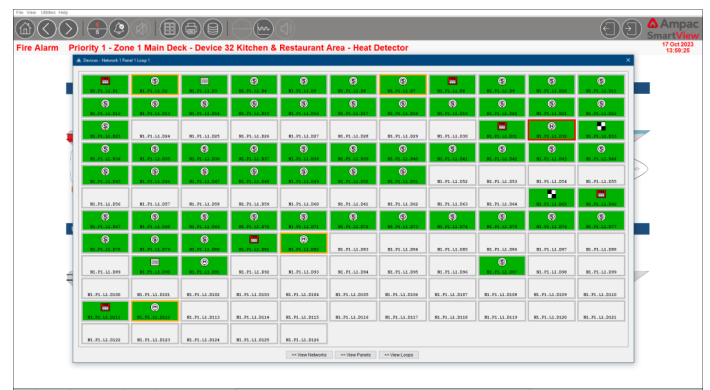
Ship Deck Plan



Event Manager and Control

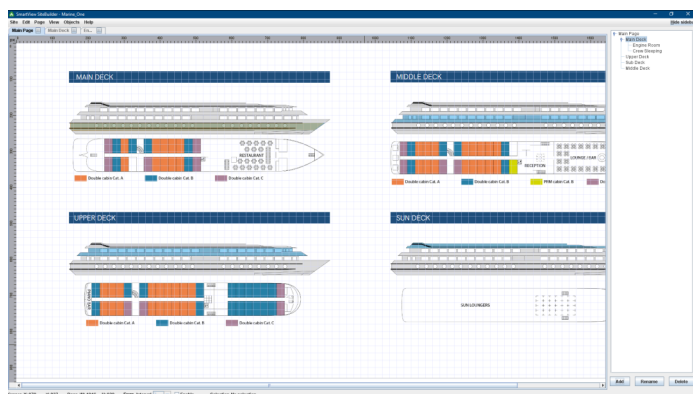


Lower Deck Plan

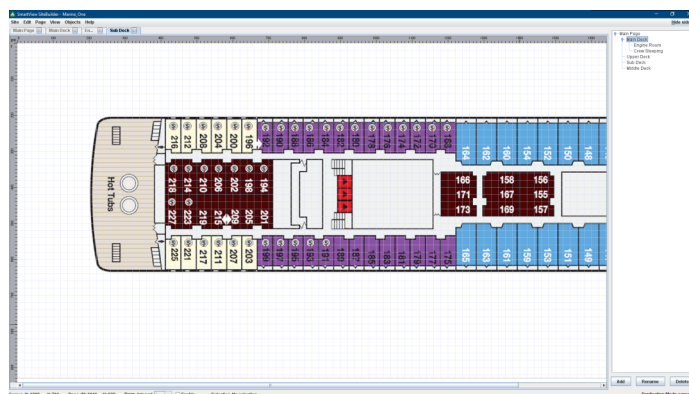


Device Assignment Table

Fire detection and evacuation solutions that save lives.



Site Builder



Create pages, navigational routes and add dynamic links and device icons

## Command Control

### Visual & Audible Alarms

As events occur, **Marine SmartView** will display the status of automatic detectors, manual break glass call points, sprinkler systems and interface devices while monitoring the condition of critical equipment such as sounder controllers, fire doors, lift controllers and smoke fans. The facility to zoom in on geographical map pages, enable the emergency situation within the vessel to be precisely pinpointed providing rapid recognition and identification of source. Audible alarms and automatic intervention procedures can be tailored to the system installation, providing unique guidance on action to be taken by the operator for each particular event.

### Alarm Messages

Individual devices connected to the **Marine SmartView** system can each have a unique location text description, alarm type header text message and priority alarm level number assigned. These text messages together with a common action information text message can be viewed by the operator during an alarm condition.

### System Interrogate

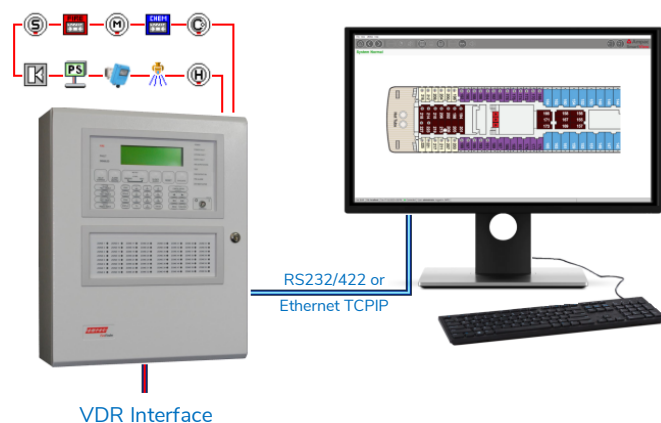
The interrogate facility allows the operator to control individual remote fire panels to initiate basic commands such as silence alarms, panel reset and evacuate. Additional commands can be sent to permit the disablement of detectors and interfaces, viewing of individual device analogue values, loop device quantities and text listings.

### Alarm History

A powerful archive facility stores information on the type of event, when it occurred and who actioned the response. A unique note tagging facility is also incorporated to enable specific information about the incident to be attributed and stored against each individual alarm. The advanced alarm search facility enables the user to filter alarms by type, priority, panel or zone allowing them to be displayed for a given day or range of days. The historical data can also be exported to an industry standard format, such as Excel, providing additional information to supplement an audit trail or incident report.

### Event Pending Display

During alarm conditions, the events are prioritised as they occur, displaying the most critical event information foremost in priority order enabling prompt user intervention at all times.



VDR Interface

## Item Numbers

4100-1004	Server licence with 4 Loops support and 1 Client & 2 browser connections
4100-1005	Additional Client
4100-1016	Upgrade to Server 4 - 16 Loops
4100-1032	Upgrade to Server 4 - 32 Loops
4100-1064	Upgrade to Server 4 - 64 Loops
4100-1128	Upgrade to Server 4 - 128 Loops
4100-1256	Upgrade to Server 4 - 256 Loops
4310-0095	Panel RS232/RS422 Interface
4310-0096	Panel Ethernet Interface

### Marine Computer Recommendations (minimum spec)

Marine approved desktop PC with 24" monitor, keyboard & mouse or Marine approved all-in-one touch screen PC. Spec: Intel Core i7 CPU 3.2 GHz Processor, 32-bit operating system with 8 GB RAM.