

Fire detection and evacuation solutions that save lives.

EvacUElite Bosch Praesensa Interface (PAIC)

Features

- PAIC Module fits into Ampac Universal Rack 1
- Consumes one slot
- Integrates EWS Controls to Bosch PA Amplifiers
- CSIRO Active Fire Certificate AFP3852

Ampac System Provides :

- AS4428.16 Controls (EWCIE)
- AS4428.4 EICIE (Emergency Intercom Optional)
- AS7240.4 PSU
- WIP EICIE system connects to Ampac Panel
- Visual Alarm Devices connect to Ampac Panel
- WIPs & VADs are configured on Ampac System

Description

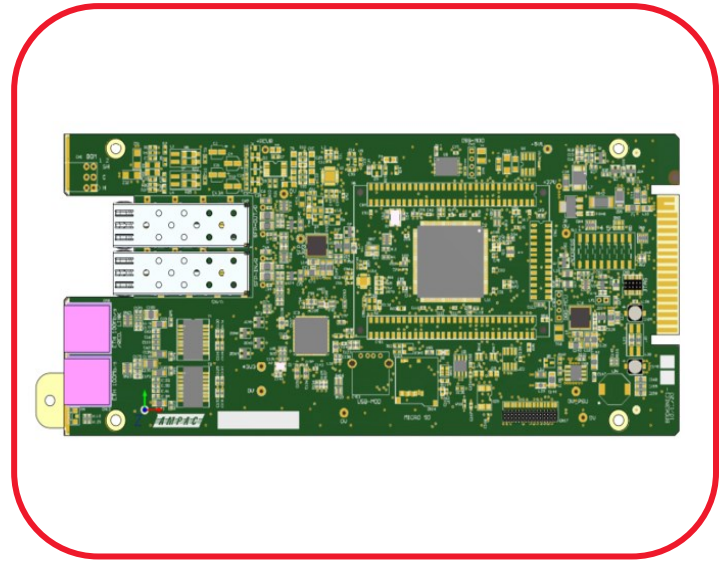
A Bosch - PAIC module consumes one rack slot in the Ampac EvacUElite primary rack. It is installed in conjunction with a specific Ampac Audio source card which integrates both systems.

The Bosch Praesensa system comprises of various PA system components. Bosch PA system amplifiers connect to Bosch PA speakers. The integrated system uses Bosch desk or wall mounted PA Call stations. The Bosch system controls public address, music sources & routings. PA priority settings etc.

The EvacUElite EWS controls are connected via the PAIC to the Praesensa Rack assembly via an ethernet Cat 5. An audio source connection (DCPU 2.5mm audio jack) is configured on the EvacUElite

The EvacUElite will automatically take control & priority in the event of Fire Panel inputs or Speech announcements made from the Emergency Microphone or use of Manual EWS mode.

Visual devices and Warden intercom systems connect as normal to the Ampac system.



Bosch - Public Address Interface Card

If the Ampac / Bosch systems serve multiple buildings in large complex the system architecture is flexible and can be distributed.

Hardware can be placed and controls configured accordingly to suit the site application.

A single node system interconnection is illustrated on the next page providing a simple overview

If you would like to discuss specific needs with Bosch and Ampac please contact your nearest Ampac sales office

Item Numbers

6350-PAIC	Bosch Public Address Interface Card
6350-DCPU-B	DCPU Version B (c/w Audio Jack)

Related Documentation

MAN3137-5	EvacUElite Installation Manual
MAN3142	EvacUElite Programming Manual
AFP3852	CSIRO ActiveFire Certificate

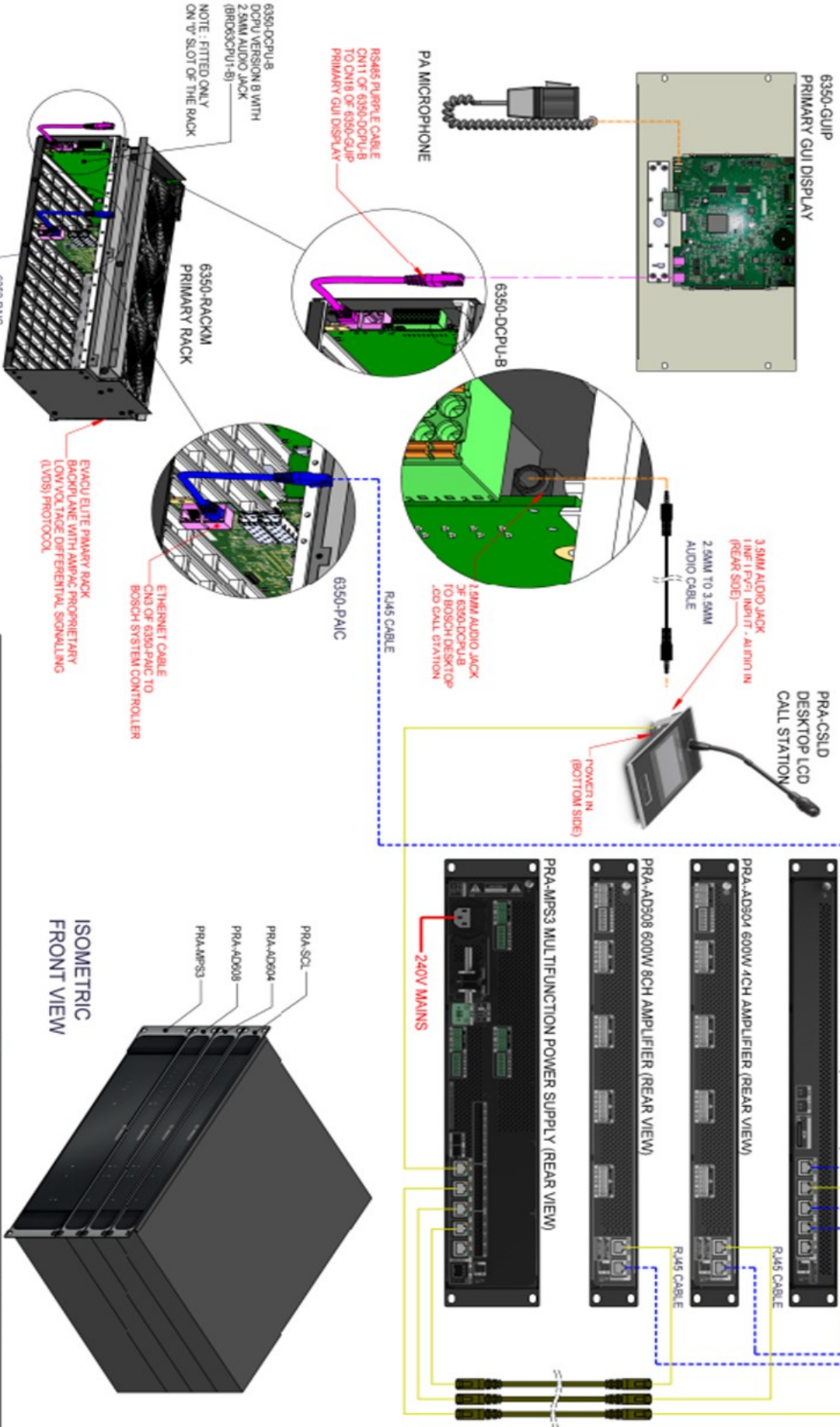
Fire detection and evacuation solutions that save lives.

AMPAC Confidential ©

AMPAC EVACU ELITE SYSTEM

BOSCH PRAESENSA PA & VOICE ALARM SYSTEM

AMPAC PART NUMBER
6350-DCPU-B &
6350-PAIC



REV	DATE	DRAWN	PT	NEW DRAWING RELEASE	REVISION HISTORY	ZONE
0	14/08/23					

DRAWING STANDARD		TOLERANCES	
AS 1100-1992	UNLESS OTHERWISE NOTED	WHOLE NUMBERS ±0.5	DECIMAL PLACES ±0.2
		2 DECIMAL PLACES ±0.1	ANGLES ±0.5°

DRN	PT	DATE	APPD	SCALE
14/08/23	JR	14/08/23	JR	1:6

AMPAC PTY LTD
7145th Road, Emerald, Western Australia, 6021
T: +61 8 9201 5100 F: +61 8 9201 5101
E: info@ampac.net.au W: www.ampac.net.au

**EVACU ELITE
6350-DCPU-B & 6350-PAIC
INSTALL GUIDE FOR BOSCH
PRAESENSA SYSTEM**

SHEET 1 OF 1

**DRAWING No.: 6350-DCPU-B & 6350-PAIC
INSTALL GUIDE**

REV 0