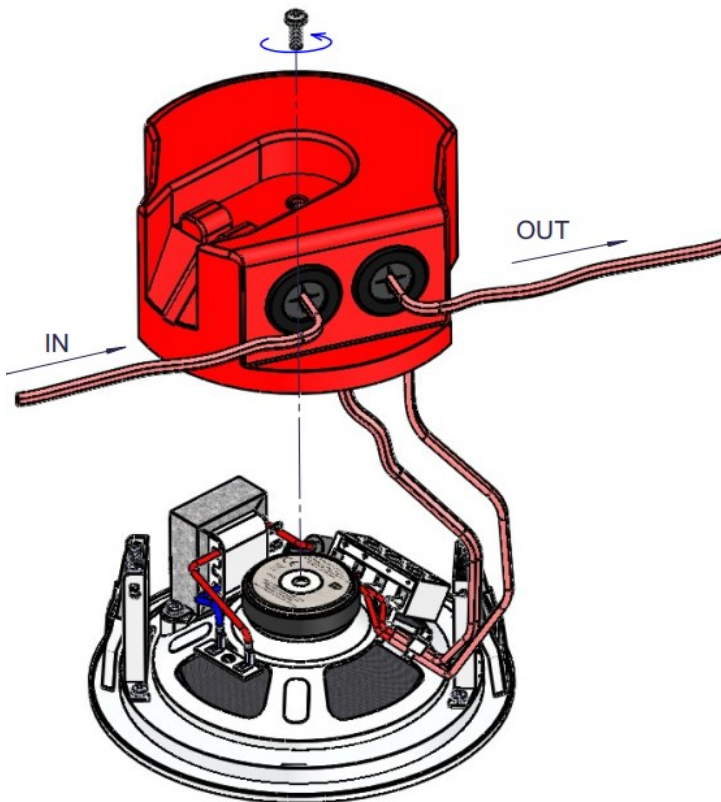
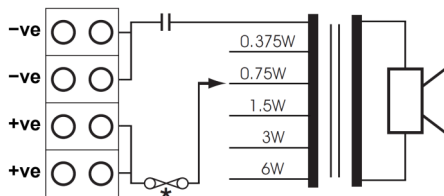


## SPK-06 Ceiling Speaker - Installation Instructions

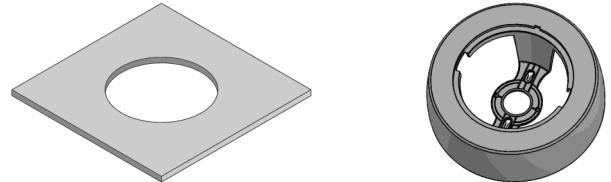


### Power Tapping

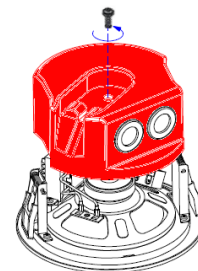


\* Optional Overload Fuse

1) Cut out a hole in the ceiling tile 140mm in diameter or mount the surface mount adaptor to the fabric of the building.

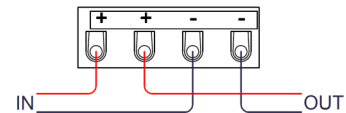


2) Loosen the screw and remove the rear contact protection cover.

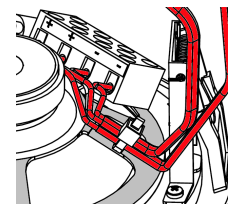


3) Feed the incoming cables through the rubber entry points located on the rear contact protection cover and connect to the terminal block of the speaker.

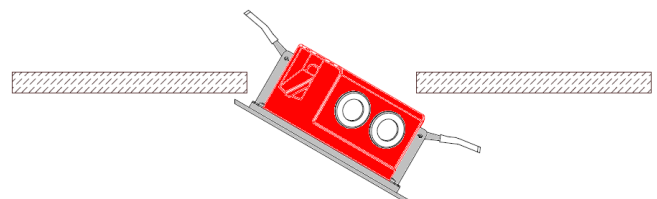
Note, compression cable glands should be used on BS5839 compliant systems.





4) Secure the cables to the metal chassis fixing point using a tie wrap. Select the desired output power and fit the rear contact protection cover.



5) Ensure that the cover is securely held in position using the wing nut and insert the speaker through the ceiling tile hole or surface adaptor.



	EN54-24:2008 1438-CPR-1003 DoP - AT-6113-6000
Loudspeaker for voice alarm systems for fire detection and fire alarm systems for buildings	
Ceiling Speaker, 6W SPK-06, Type A	
The Ampac Group of companies 7 Ledger Road, Balcatta, Western Australia 6021	
CE-Symbol according 93/68EWG CPR compliance according 305/2011/EU	
	AS ISO 7240.24:2018 SMK41545